



GPU Nuclear Corporation
Post Office Box 480
Route 441 South
Middletown, Pennsylvania 17057
717 944-7621
TELEX 84-2386
Writer's Direct Dial Number

August 30, 1983
4410-83-L-0189

TMI Program Office
Attn: Dr. B. J. Snyder
Program Director
US Nuclear Regulatory Commission
Washington, DC 20555

Dear Sir:

Three Mile Island Nuclear Station, Unit 2 (TMI-2)
Operating License No. DPR-73
Docket No. 50-320
Fuel Pool 'A' Refurbishment Safety Evaluation Report
Revision 1

Attached is a revision to Figure 2.2, "Two Slab Rigging Beam", of the Fuel Pool 'A' Refurbishment Safety Evaluation Report. The purpose of this revision is to reflect the welding of a stiffener plate to the lifting lugs shown in the lifting lug detail. In addition, the lug thickness was reduced to allow usage of previously qualified welding procedures. Accordingly, a stress analysis was conducted which confirmed the reduced lug thickness as sufficient to perform its design intent.

If you have any questions on this information, please contact Mr. J. J. Byrne of my staff.

Sincerely,

B. K. Kanga
Director, TMI-2

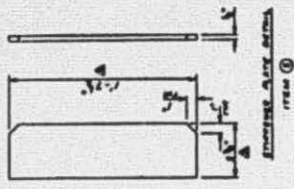
BKK/RDW/jep

Attachment

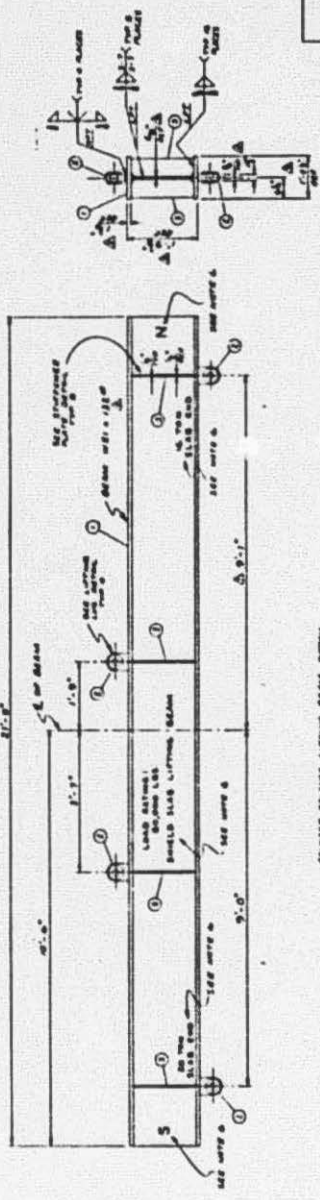
CC: Mr. L. H. Barrett, Deputy Program Director - TMI Program Office

8309060183 830830
PDR ADDCK 05000320
P PDR

D009
1/1



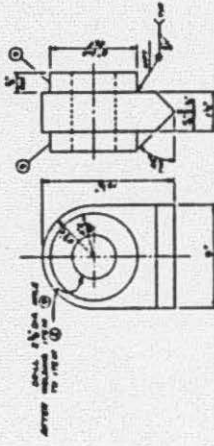
ITEM ⑩
LIFTING BEAM DETAIL



CONCRETE BRIDGE LIFTING BEAM DETAIL

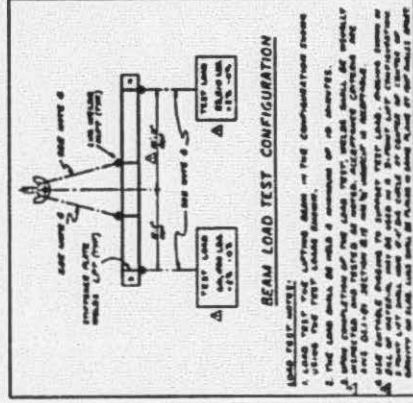
BILL OF MATERIAL

ITEM	DESCRIPTION	QUANTITY	UNIT
1	STEEL BEAM 12" x 12" x 1/2"	1	EA
2	LIFTING BEAM 12" x 12" x 1/2"	1	EA
3	STEEL PLATE 1/2" x 12" x 12"	1	EA
4	STEEL PLATE 1/2" x 12" x 12"	1	EA
5	STEEL PLATE 1/2" x 12" x 12"	1	EA
6	STEEL PLATE 1/2" x 12" x 12"	1	EA
7	STEEL PLATE 1/2" x 12" x 12"	1	EA
8	STEEL PLATE 1/2" x 12" x 12"	1	EA
9	STEEL PLATE 1/2" x 12" x 12"	1	EA
10	STEEL PLATE 1/2" x 12" x 12"	1	EA



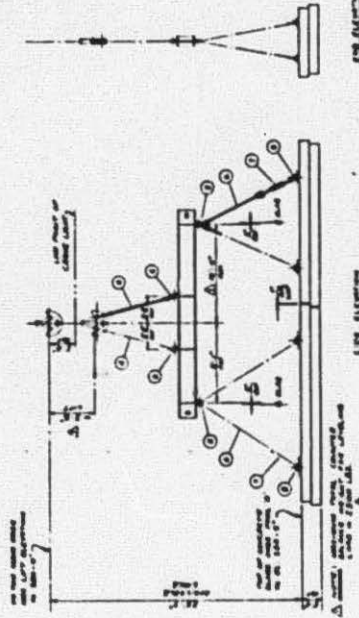
ITEM ⑩
LIFTING BEAM DETAIL

CONSTRUCTION DETAILS:
 1. LIFTING BEAM SHALL BE FABRICATED IN ACCORDANCE WITH AISC SPECIFICATION FOR STEEL BEAMS.
 2. LIFTING BEAM SHALL BE WELDED TO THE CONCRETE BRIDGE DECK.
 3. LIFTING BEAM SHALL BE WELDED TO THE CONCRETE BRIDGE DECK.
 4. LIFTING BEAM SHALL BE WELDED TO THE CONCRETE BRIDGE DECK.
 5. LIFTING BEAM SHALL BE WELDED TO THE CONCRETE BRIDGE DECK.
 6. LIFTING BEAM SHALL BE WELDED TO THE CONCRETE BRIDGE DECK.
 7. LIFTING BEAM SHALL BE WELDED TO THE CONCRETE BRIDGE DECK.
 8. LIFTING BEAM SHALL BE WELDED TO THE CONCRETE BRIDGE DECK.
 9. LIFTING BEAM SHALL BE WELDED TO THE CONCRETE BRIDGE DECK.
 10. LIFTING BEAM SHALL BE WELDED TO THE CONCRETE BRIDGE DECK.

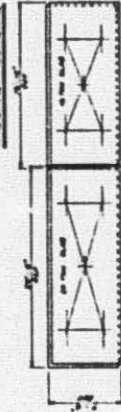


ITEM ⑩
BEAM LOAD TEST CONFIGURATION

LOAD TEST METHOD:
 1. LOAD TEST METHOD SHALL BE IN ACCORDANCE WITH AISC SPECIFICATION FOR STEEL BEAMS.
 2. LOAD TEST METHOD SHALL BE IN ACCORDANCE WITH AISC SPECIFICATION FOR STEEL BEAMS.
 3. LOAD TEST METHOD SHALL BE IN ACCORDANCE WITH AISC SPECIFICATION FOR STEEL BEAMS.
 4. LOAD TEST METHOD SHALL BE IN ACCORDANCE WITH AISC SPECIFICATION FOR STEEL BEAMS.
 5. LOAD TEST METHOD SHALL BE IN ACCORDANCE WITH AISC SPECIFICATION FOR STEEL BEAMS.
 6. LOAD TEST METHOD SHALL BE IN ACCORDANCE WITH AISC SPECIFICATION FOR STEEL BEAMS.
 7. LOAD TEST METHOD SHALL BE IN ACCORDANCE WITH AISC SPECIFICATION FOR STEEL BEAMS.
 8. LOAD TEST METHOD SHALL BE IN ACCORDANCE WITH AISC SPECIFICATION FOR STEEL BEAMS.
 9. LOAD TEST METHOD SHALL BE IN ACCORDANCE WITH AISC SPECIFICATION FOR STEEL BEAMS.
 10. LOAD TEST METHOD SHALL BE IN ACCORDANCE WITH AISC SPECIFICATION FOR STEEL BEAMS.



ITEM ⑩
LIFTING BEAM DETAIL



ITEM ⑩
LIFTING BEAM DETAIL

CONCRETE BRIDGE LIFTING BEAM DETAIL

ITEM	DESCRIPTION	QUANTITY	UNIT
1	STEEL BEAM 12" x 12" x 1/2"	1	EA
2	LIFTING BEAM 12" x 12" x 1/2"	1	EA
3	STEEL PLATE 1/2" x 12" x 12"	1	EA
4	STEEL PLATE 1/2" x 12" x 12"	1	EA
5	STEEL PLATE 1/2" x 12" x 12"	1	EA
6	STEEL PLATE 1/2" x 12" x 12"	1	EA
7	STEEL PLATE 1/2" x 12" x 12"	1	EA
8	STEEL PLATE 1/2" x 12" x 12"	1	EA
9	STEEL PLATE 1/2" x 12" x 12"	1	EA
10	STEEL PLATE 1/2" x 12" x 12"	1	EA

TWO SLAB RIGGING SCHEME AND LIFTING BEAM DETAIL

ITEM	DESCRIPTION	QUANTITY	UNIT
1	STEEL BEAM 12" x 12" x 1/2"	1	EA
2	LIFTING BEAM 12" x 12" x 1/2"	1	EA
3	STEEL PLATE 1/2" x 12" x 12"	1	EA
4	STEEL PLATE 1/2" x 12" x 12"	1	EA
5	STEEL PLATE 1/2" x 12" x 12"	1	EA
6	STEEL PLATE 1/2" x 12" x 12"	1	EA
7	STEEL PLATE 1/2" x 12" x 12"	1	EA
8	STEEL PLATE 1/2" x 12" x 12"	1	EA
9	STEEL PLATE 1/2" x 12" x 12"	1	EA
10	STEEL PLATE 1/2" x 12" x 12"	1	EA